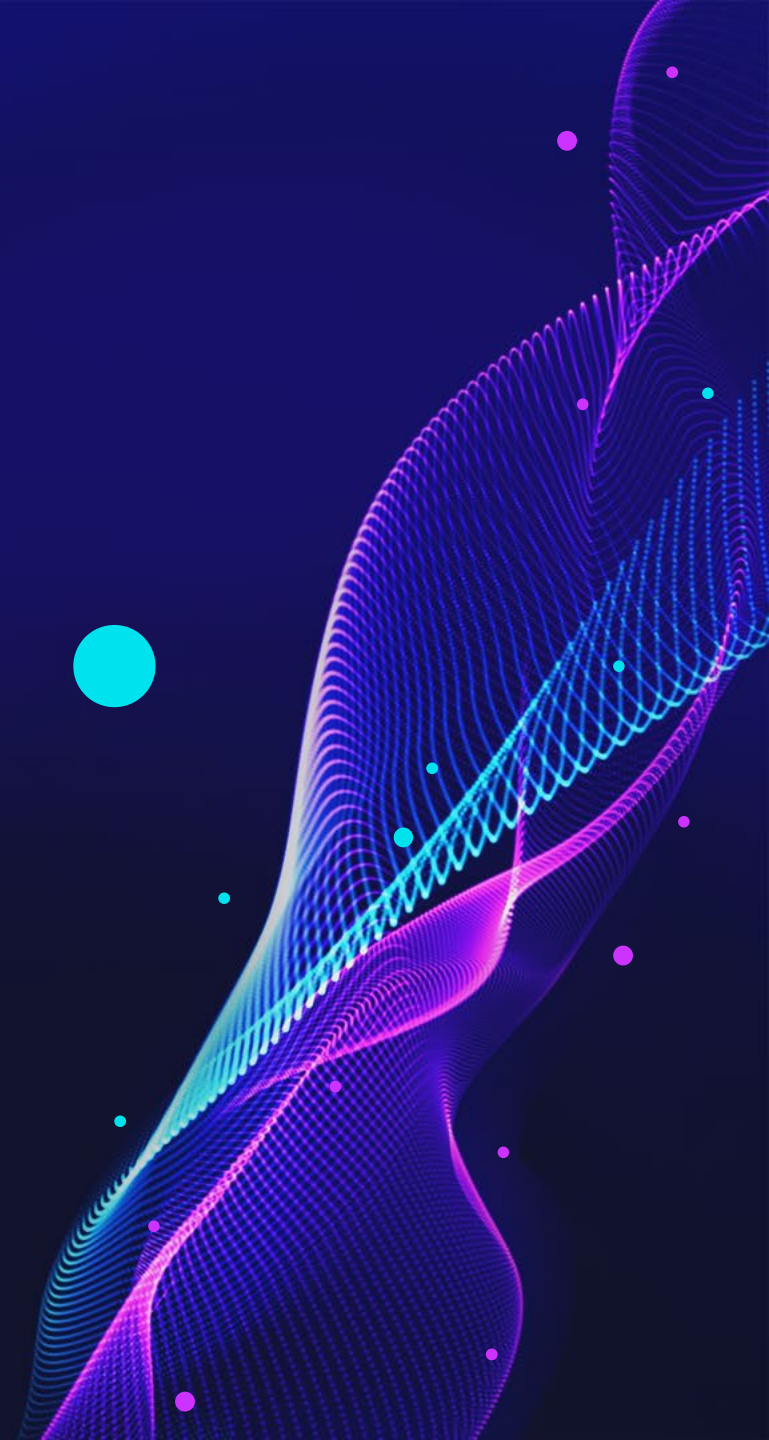




# SupTech Reimagined

Putting data understanding first.  
Bridging business and tech needs.



# SOLVING THE PROBLEM AND MAXIMISING THE VALUE



New supervisory needs and regulatory changes affect data collection & processing each year.

Just in the EU banking sector, there are three new frameworks for banks to introduce more than **3 000 new validation rules**.

## **ATOME POWERS** DATA-DRIVEN CHANGE MANAGEMENT

More data and checks mean more insightful supervision and **data-driven decision-making**. Automated processes bring an 'intelligence' component to the whole change management, making it less time- and effort-consuming.

**Explore how ATOME makes it happen →**

# REGULATORY CHANGE MANAGEMENT REIMAGINED

## ΔTOME

Different data



Insurance, Banking, Pension  
Funds, Investment Firms  
Financial and Non-Financial Data

ΔTOME  
**matter**



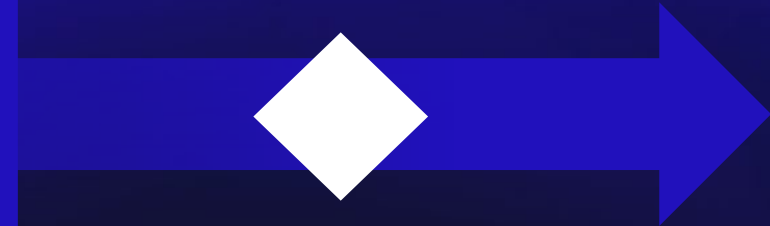
ΔTOME  
**Particles**



ΔTOME  
**Vortex**



Processed, meaningful,  
harmonious and organised data



Clear communication of changes for  
better compliance and less burden

**Maximise the power of standard:**

supervisory data modelling (Data Point Model) and digital reporting (XBRL)

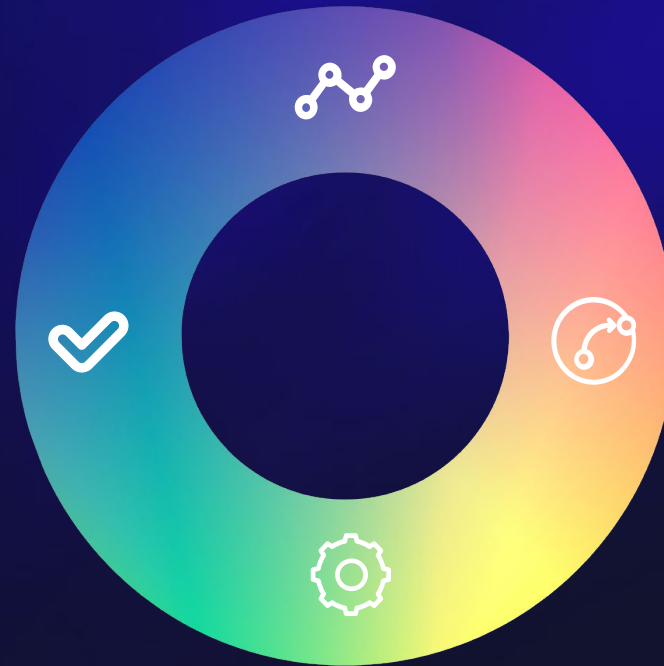
# OUR VALUE PROPOSITION FOR REG-DATA MANAGEMENT & SYSTEMS

## Data Understanding by Design

- Automated Data Collection
- Integration of Data from Disparate Sources
- Standardised Data Design
- Regulatory Change Management
- Data Consultation & Collaboration

## Business Intelligence

- Regulatory data analysis
- Data Visualisation
- Granular Data Analytics
- Use of XBRL Data



## Data Quality

- Quality checks & Business Rules
- Data Validation
- Regulatory Reporting
- Compliance Management

## Data Collection & Reporting

- Data collection
- Management of Regulatory Reporting
- Reporting Schedules

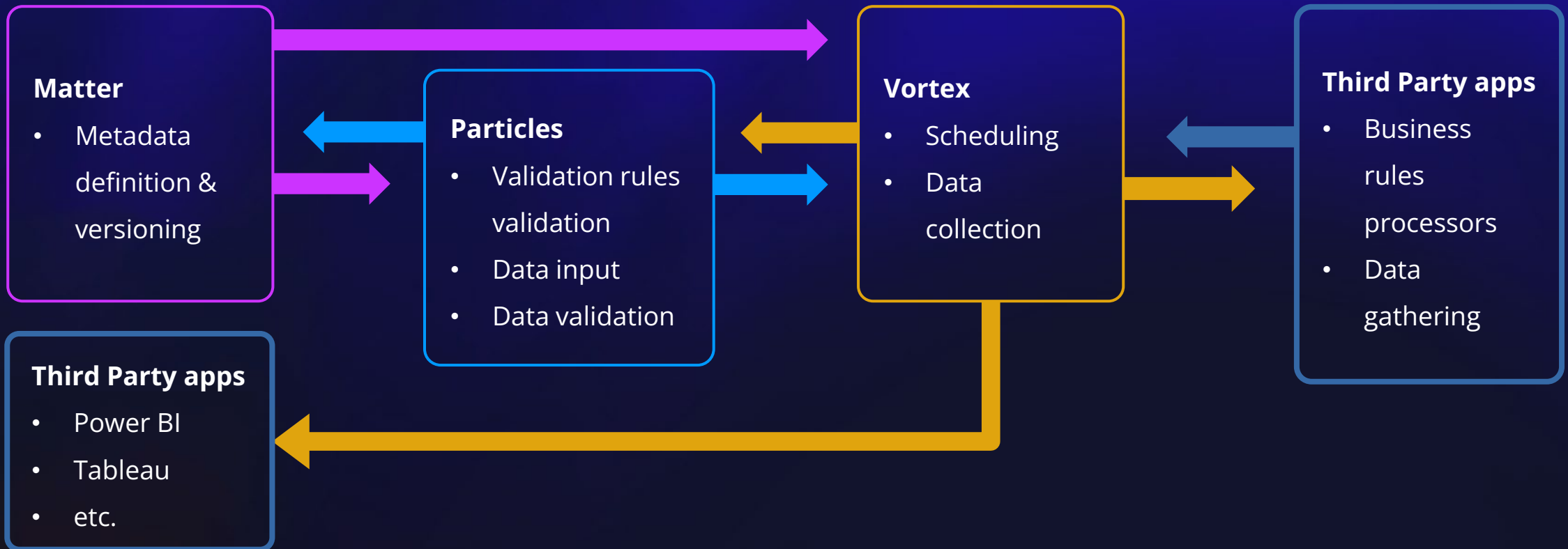
# ATOME PLATFORM CLOSE LOOK



NCAs/NCBs



Reporters



# ΔTOME

Know your data.  
Build trust



Make interoperable, analyse



Collect, validate, make accessible



Standardise & prove



Trace, map & link to source



Identify & classify



Understand



## GET IN TOUCH WITH US

**Marta Kuczyńska**

*Head of BD Team*

[marta.kuczynska@br-ag.eu](mailto:marta.kuczynska@br-ag.eu)